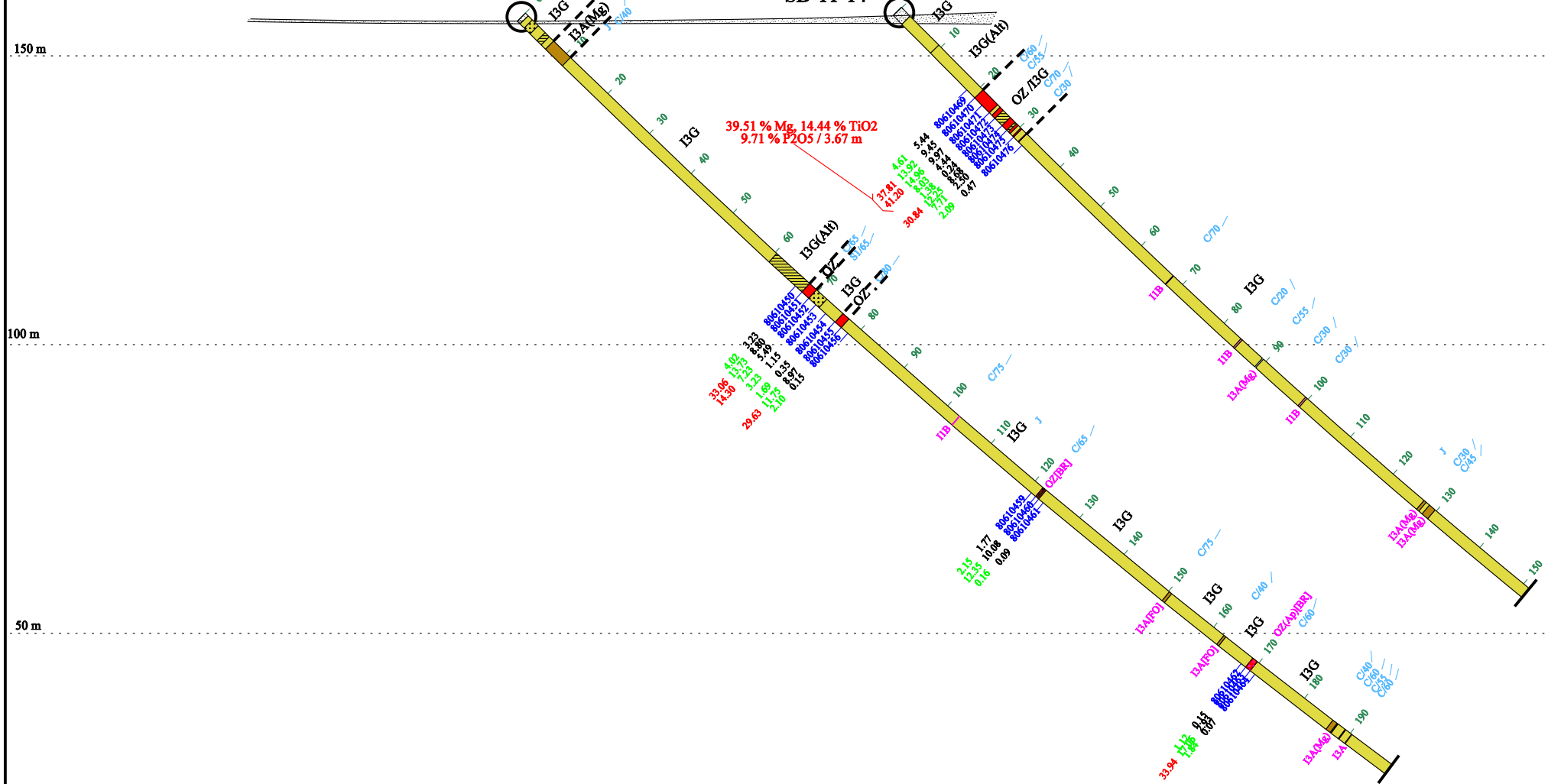


261° ←

→ 81°

SB-11-13
 UtmX: 317961 E
 UtmY: 5376657 N
 UtmZ: 156 m
 Azimuth: 74°
 Dip: -44.9°
 Depth: 199.05 m

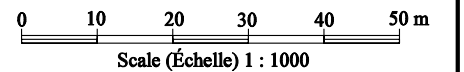
SB-11-14
 UtmX: 318027 E
 UtmY: 5376662 N
 UtmZ: 157 m
 Azimuth: 57°
 Dip: -45.8°
 Depth: 151.31 m



LEGEND (LÉGENDE)

- OB Overburden (Mort-terrain)
- I1B Granite
- I1G Pegmatite
- I2D Syenite (Syénite)
- I2E Quartz monzonite (Monzonite quartzifère)
- I2F Monzonite
- I2J Diorite
- I3A Gabbro
- I3G Anorthosite
- I4B Pyroxenite (Pyroxénite)
- OZ Ore zone
- (Al) Alteration (Altération)
- [BR] Breccia (Brèche)
- [POR] Porphyric (Porphyrique)

- S145 — Foliation/Core angle
- B: Breccia
- C: Contact
- F: Fault
- J: Fracture
- Ap: Apatite
- Mg: Magnetite (Magnétite)
- 31.70 13.42 9.99 Mg %, TiO2 %, P2O5 %
- 68710006 Sample number (Numéro d'échantillon)
- 20 Hole depth (Profondeur de forage)
- - - Geological contact (Contact géologique)



MICREX Development Corp. MICREX Development Corp.

806 Project (Projet): ST-CHARLES

Section: SB-11-13,14

SNRC (NTS): 22D11
 UTM, Zone19, Nad83

DDH: Forages S.L.
 Geologist: A. Aubin
 Drawing: Sanmei Gao
 Date: Jan., 2012

ios services
 GEOSCIENTIFIQUES

Alexandre Aubin, Eng.