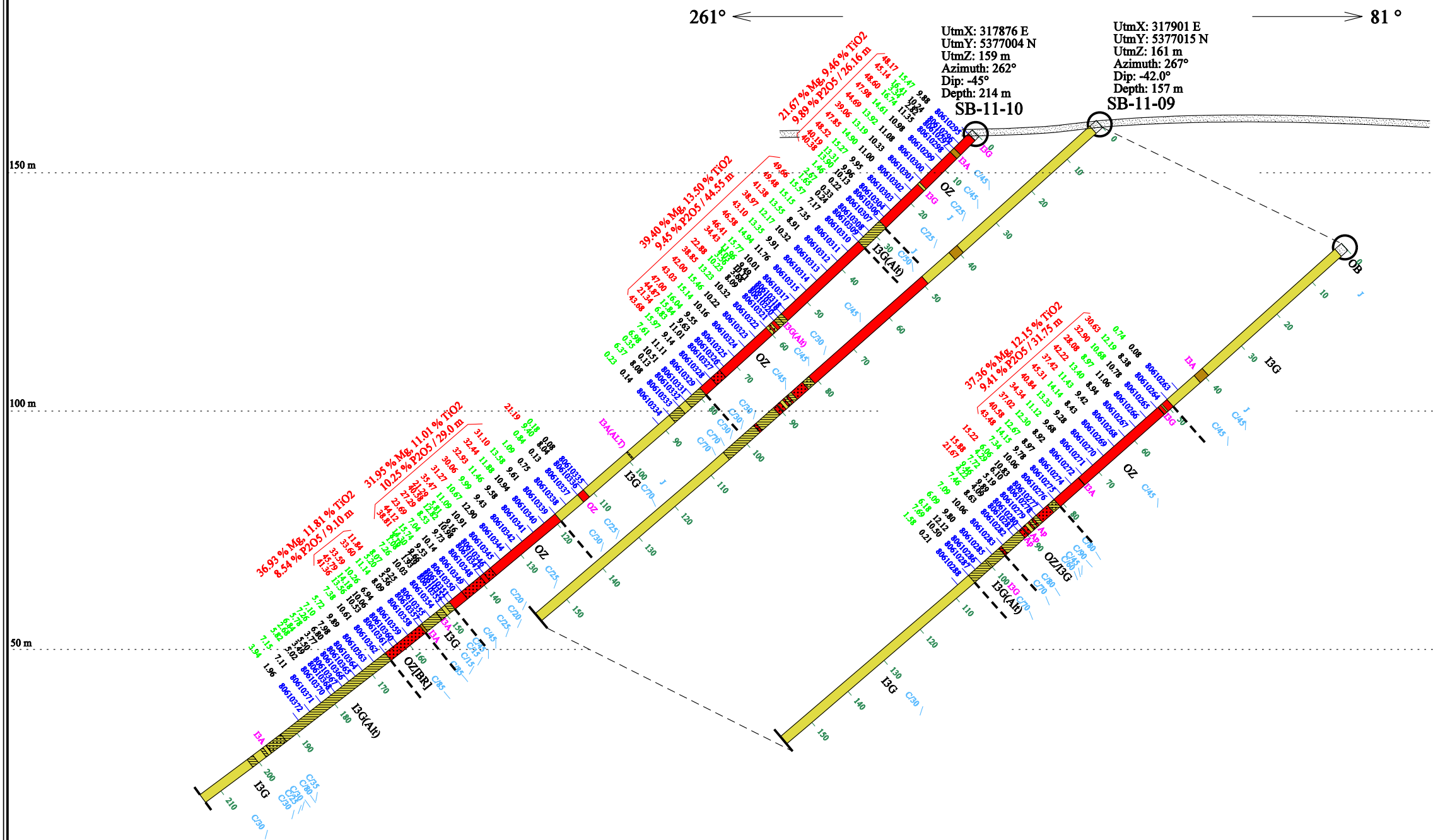


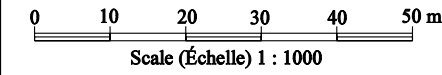
Plan strip



LEGEND (LÉGENDE)

- OB Overburden (Mort-terrain)
- I1B Granite
- I1G Pegmatite
- I2D Syenite (Syénite)
- I2J Diorite
- I3A Gabbro
- I3G Anorthosite
- I4B Pyroxenite (Pyroxénite)
- OZ Ore zone
- (Alt) Alteration (Altération)
- [BR] Breccia (Brèche)
- [POR] Porphyric (Porphyrique)

- SIMS — Foliation/Core angle
- B Beccia
- C Contact
- F Fault
- Ap: Apatite
- Mg: Magnetite (Magnétite)
- 31.70 13.42 9.99 Mg %, TiO₂ %, P₂O₅ %
- 68710006 Sample number (Numéro d'échantillon)
- 20 Hole depth (Profondeur de forage)
- Geological contact (Contact géologique)



MICREX Development Corp. MICREX Development Corp.

806 Project (Projet): ST-CHARLES

Section: SB-11-09,10

SNRC (NTS): 22D11
UTM, Zone19, Nad83

DDH: Forages S. L.
Geologist: A. Aubin
Drawing: Sanmei Gao
(Dessin)
Date: Jan., 2012

iosservices
GÉOSCIENTIFIQUES

Alexandre Aubin, Eng.